

# JD-Contractor A/S

Nybovej 8-9  
DK-7500 Holstebro  
+45 97 42 63 11  
www.jdcon.com  
VAT DK 16 93 56 97



## CLV/DSV Vina



M/S Vina is a multipurpose DP1 Installation Vessel converted in 2010/14 and upgraded with a DP system 2014. It can operate worldwide, and can be adapted to many different tasks such as cable installation, survey & ROV-work and offshore diving.

It can operate anywhere in the world, and due to its design the vessel can quickly be adapted to a number of different situations and accommodate 24 persons in single cabins. Among other the vessel has been used for cable installation, survey & ROV-work and offshore diving.

GENERAL		DIMENSIONS		MACHINERY		
Name	Vina	Length	72,25	Main engines	1X	1449 kW
Call sign	OVJJ2	Breadth	14.00	Stern thrusters	1X	700 kW
IMO number	7712896	Light draft	4.00	Bow thruster	1X	700 kW
Flag	Danish	Max. draft	6.50	Aux. engines	3X	736 kW
Built	1979	Gross tonnage	2065	Harbour Engine	1X	110 kW
Converted	2010/2014	Work deck area	38x14	Equipment pool	1X	0.7x0,7m
Classification	RINA	Cargo M. deck	38x3.7	Hatch		12.8x4.5
Certification	CLV/DSV	Cargo L. deck	35x2.4	Side door		6.7x5

Revision date 06-12-2018



*\*All figures and data believed to be correct, but not guaranteed*

This document contains confidential information. All rights, including but not limited to copyright, information and design rights are owned by JD-Contractor A/S. No use or disclosure is to be made without prior written permission from JD-Contractor A/S. All rights reserved.

## CLV/DSV Vina

### DP1 & Six Point Mooring Installation Vessel

#### NAVIS NavDP 4000 DP1 SYSTEM

The NAVIS NavDP 4000 series provides manual, automatic or combined (semi-automatic) ship control.

There are both separate and simultaneous NAVIS NavDP 4000 series control of ship position (coordinates) and heading.

The system is included ROV follow up and direct link-up with USBL.



#### Bridge equipment

Vina has radio- and navigation equipment according to industry standard:

- Transas ECDIS chart system
- Satellite Communication
- NaviPac Online connected to precise RTK DGPS, ORE BATS or SONARDYNE Scout USBL Portable System and depth sensors

The system can communicate with Cable Laying Equipment; ROV's and tugs which gives exact location of vessel, cable & ROV.

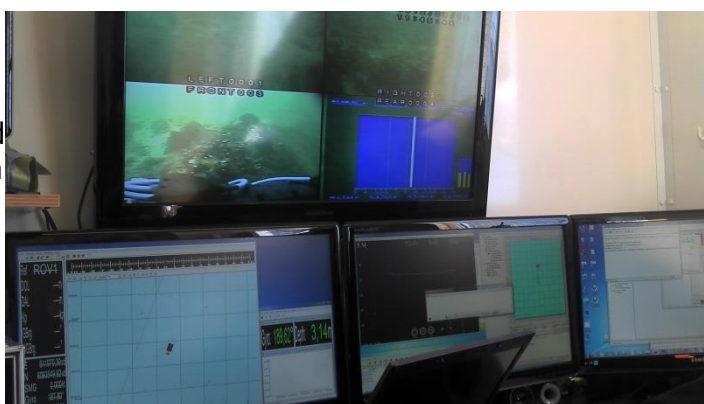


#### Survey & ROV work area

On the bridge there is a dedicated survey area prepared with cabling etc. so it can be connected with data from both the bridge and equipment on deck.

In addition a dedicated survey container can be added on the boat deck.

Additionally sidescan sonar, multibeam, ROV etc. can be launched and operated from the vessel.



## CLV/DSV Vina

### DP1 & Six Point Mooring Installation Vessel

#### Offshore Diving Systems

If needed Vina can be equipped with Complete Offshore Diving System.

The diving systems have the latest technology for conventional diving as well as Nitrox and Trimix diving.

This allow for diving operations down to a water depth of 100 meters.



#### Cable tank, turntable or drum stand

Vina can be equipped with turntable, coil tank or drum stands for cable installation.

In connection with cable laying work the vessels is rigged with tensioners, rollers and chutes.

In case the cable needs to be handled from a drum, a drum stand capable of handling drums up to 40 t can be installed on the vessel.



#### Crane & six point mooring

A 34 ton Pedestal-crane is installed on the vessel and a 75 ton heavy lift boom.

Furthermore the vessel is equipped with six warp winches and 6 X 1,5 t Delta Flipper anchors for operating in six point mooring.



#### Modern welfare facilities

All accomodation has been renewed in 2010/2014 and appears new and inviting.

The vessel has 23 single cabins and one double cabin.

The vessel has a gym and game room.



## CLV/DSV Vina

### DP1 & Six Point Mooring Installation Vessel

Capacity			Consumption	Approx.
Cargo fuel max	mt	220	Engine consumption 80%	6 mt
Portable water	m <sup>3</sup>	80	Engine consumption DP	10 mt
Lubricating oil	mt	1,3	Type(s) of fuel used	Marine gasoil
Max speed	knots	11	Endurance (days)	25
Service speed	knots	10	Ranges at cruising speed	9500 nm
Pedestal Crane	20m/34mt	28m/28mt	<b>Accommodation</b>	
Supply crane	3m/5mt			
Heavy lift Boom	T	75mt	Crew (min)	8
			Passengers (max)	16

